



1665
SUITE 101

SOVER

1665
SUITE 107

UNITED
CAR
CARE

RESERVED
PARKING
1665
SUITE 101
SOVER

UNITED
CAR
CARE

UNITED
CAR
CARE

UNITED
CAR
CARE

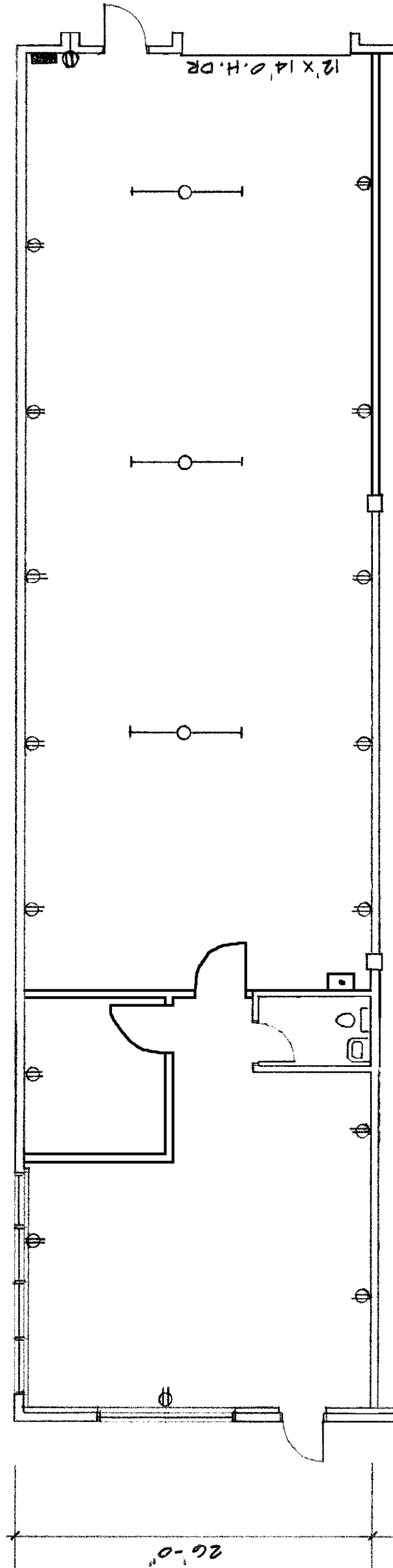
UNITED
CAR
CARE

UNITED
CAR
CARE

UNITED
CAR
CARE

1665 Quincy Avenue, #191

2,600 Sq. Ft.





SOBER.
LIKE COLBERT.
NOT SOBER.





A black metal shelving unit on the left side of the room. The top shelf contains several boxes, some of which are labeled 'ULINE'. Below the boxes, there are various items including what appears to be a roll of paper or fabric, and some smaller boxes.

A large black metal shelving unit in the center of the room. It is filled with numerous clear plastic storage bins, many of which have blue labels. The bins are arranged in rows on the shelves. A blue tarp is draped over the right side of the unit.

A wooden chest of drawers with three drawers, located on the left side of the room. The drawers have dark handles.

A black refrigerator in the foreground on the left. It is covered in various stickers, including one that says 'SUPPORT YOUR LOCAL BREWERY' and another that says 'TOM FOR THE MAYOR'. There are also several circular and rectangular stickers of various designs.

A small wooden table with a green top and a wooden frame, positioned in the foreground. It has a simple design with four legs.

A grey sofa in the foreground, facing away from the camera. It has a simple, modern design with a metal base.

A blue mat on the floor near the window, partially overlapping a red border on the carpet.

A row of black storage bins lined up along the right wall. The bins are stacked and have black lids with latches.

A cardboard box in the foreground on the right, containing several rolls of white paper or fabric.

A red fire extinguisher mounted on the wall near the window.

A window on the right side of the room, with a wooden frame and a view of the outdoors.



SOBER.
LIKE COLBERT.
NOT SOBER.















1865-W191

UNITED
CAR
CARE

NO PARKING

NO PARKING