

SALES AND LEASING EXHIBIT
FOR

FOUNDRY BUSINESS PARK

BEING A PART OF THE WEST HALF OF SECTION 28,
TOWNSHIP 40 NORTH, RANGE 8 EAST OF THE THIRD
PRINCIPAL MERIDIAN, IN KANE COUNTY, ILLINOIS.

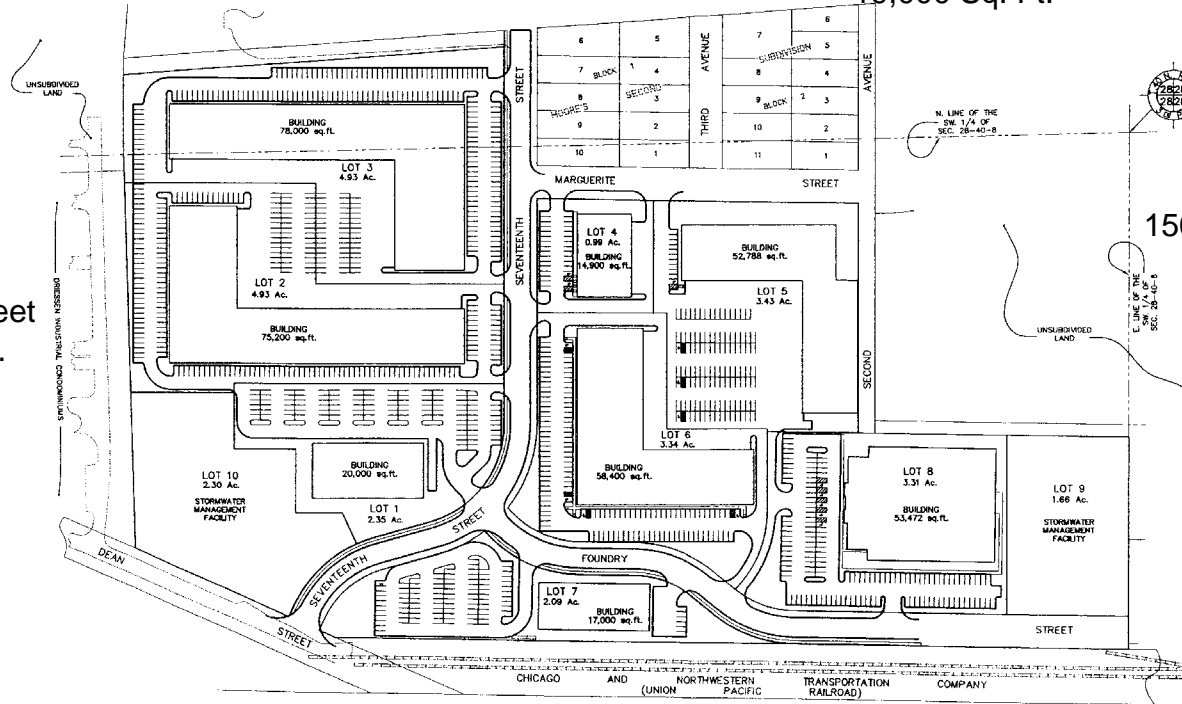
Lot 3
761 N. 17th Street
77,300 Sq Ft.

Lot 4
750 N. 17th Street
19,000 Sq. Ft.

Lot 2
731 N. 17th Street
73,000 Sq. Ft.

Lot 5
1500 Foundry Street
52,000 Sq. Ft.

Lot 6
720 N. 17th Street
57,060 Sq. Ft.



AREA SUMMARY	
TOTAL AREA OF SUBDIVISION=	31.451 ACRES
	(MORE OR LESS)

LEGEND	
	SUBDIVISIONS OR PROPERTY LINE (Double Dashed Line)
	LOT LINE/PROPERTY LINE (Single Dashed Line)
	BUILDING LINE (Long Dashed Line)
	EASEMENT LINE/LIMITS OF EASEMENT (Short Dashed Line)
	QUARTER SECTION LINE (Double Dotted Line)
	SET CONCRETE MONUMENT
	SECTION CORNER OR QUARTER SECTION CORNER

PREPARED FOR:
AMERICAN SMALL BUSINESS L.L.C.
1805 HIGH GROVE LANE
NAPERVILLE, ILLINOIS 60540
(630) 355-8094

PREPARED BY:
CEMCON, Ltd.
Consulting Engineers, Land Surveyors & Planners
18131 COUNTY FARM ROAD
WINFIELD, ILLINOIS 60190
(815) 853-1100
DSC NO. : 498013 FILE NAME : SALESPLAT
DRAWN BY : RDS PLD. BK. / PG. NO. : 643/1-5.
COMPLETION DATE : 05-29-02 JOB NO. : 498-013